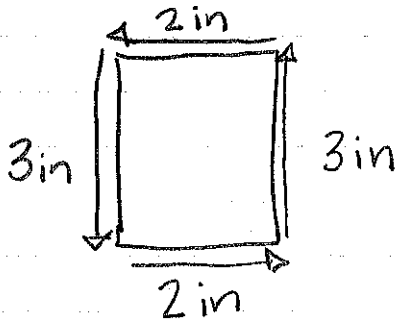


Perimeter vs. Area vs. Volume

- Perimeter - distance AROUND a 2-D shape
* add all sides

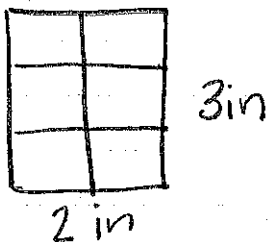


examples:

- fence
- picture frame
- cage

$$2 + 3 + 2 + 3 = 10 \text{ inches}$$

- Area - number of square units that COVERS a 2-D shape
* Length x width

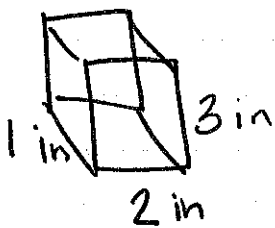


examples:

- carpet
- paint
- wallpaper

$$2 \times 3 = 6 \text{ inches}^2$$

- Volume - number of cubes it takes to FILL a 3-D object
* Length x width * height



examples:

- water to fill a pool
- popcorn fits in a box
- sand to fill a sandbox

$$1 \times 2 \times 3 = 6 \text{ inches}^3$$

6 cubic inches